

# Correlator Quick Start Guide

## Table of Contents

- [Introduction](#)
- [Getting Started](#)
- [Credits](#)
- [Archived Versions](#)



*Stratigraphic correlation work space.*

## Introduction

**Correlator** is a program developed for stratigraphic correlation of IODP cores collected at multiple holes at a single drill site. The current full manual ([s cors\\_correlator\\_ug\\_20190321.docx](#)) is available here. A copy of this and older manuals can be found in a folder Strat-Correlation on the desktop of the Correlator computer, in Cumulus, and elsewhere on the servers. The Quick Start Guide is intended for those who know the methodology and philosophy behind stratigraphic correlation and want to get started using **Correlator** quickly.

## Getting Started

To get started:

- The primary computer used for stratigraphic correlation on the *JOIDES Resolution* (JR) is the Apple computer with two large screens located next the NGR and Core Splitting Room. You can also run **Correlator** from other Macs or PCs. For this quick guide, the assumption is you are using CorrelatorMac\_2.1\_rc2.app or a similar version.
- Get data for **Correlator** by using Correlator Downloader program called **corrdownloader.jnpl**. This is a Java program usually located on the Desktop or on the Mac's Dock bar (look for the Coffee icon).
  - CorrelatorDownloader is fairly straightforward to use. Select the data you want to download, cull the data if you want by limiting max for min values or trimming data near edges of sections. You can download multiple data sets from all the holes at a site, rather than doing each one separately (Figure 1).
  - Press the bar at the bottom of the page called "Download correlation data".
  - Download data to a folder of your choice. Lets use the Desktop and create a folder called ExpXXX-Correlator, where XXX is your expedition number.
  - You can hit the "Save control file" to reuse the **corrdownloader.jnpl** query later. For example, when more data are collected and you need to update the data you are using in **Correlator**. The query will be saved as a \*.jsn file, which can be opened and reused by clicking on the "Browse" and "Upload" buttons in **corrdownloader.jnpl**.

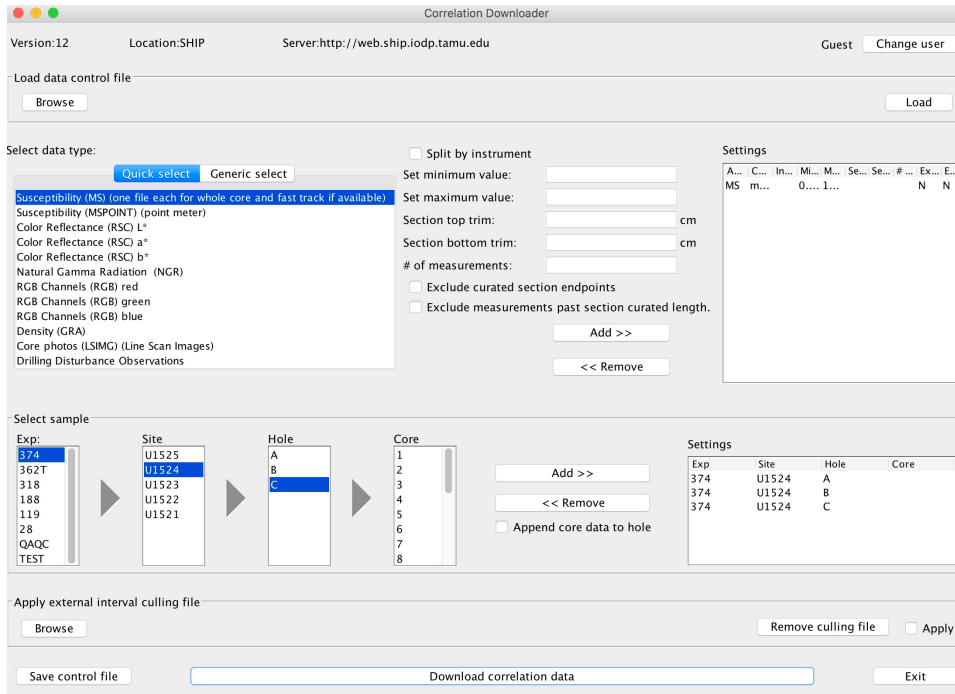


Figure 1. Screen shot of Correlator Downloader.

- Open **Correlator**: It's the squiggly line icon on the dock (Figure 2). You should see the **Data Manager** screen (Figure 3). If no data had been uploaded, the **Data Manager** would show only the **Root** item

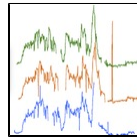


Figure 2. Correlator icon for starting up the program.

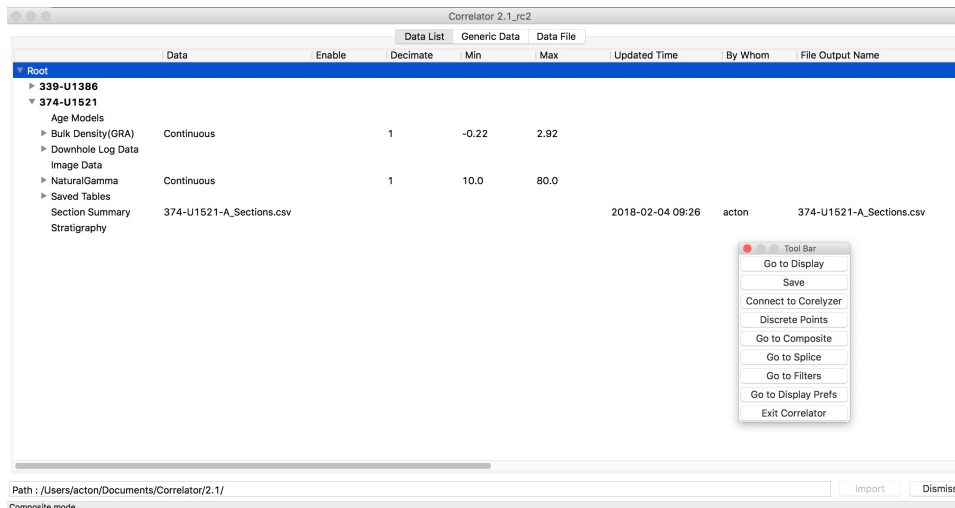


Figure 3. Correlator Data Manager window.

- Import data
  - You have to import each file separately for them to show up in the Data List.
    - Right-click on the word *Root* on the top line item and select Add new data (the only option except deleting Root).
    - A browser window opens that allows user to browse to the data files in a directory of choice, e.g., the ExpXXX-Correlator folder.
      - The content of each data file must be for one hole and one data type. This is automatically true if **corrdownloader.jpnl** was used.

- Select a data file to open.
  - Select appropriate items for the data columns (Expedition, Site, Hole, ..., Depth, Data).
    - Mainly, you need to confirm or set the header of the first column if it is empty. Click on the header and select one of the listed data types.
      - If a suitable data type is not available, create a data label using User define.
        - In the case of User define, also click the Register box, which will add the name to the choice list.

This is the end of the current quick start guide. See page 6 of the current draft manual ([scors\\_correlator\\_ug\\_20190321.docx](#)) to continue with importing data, correlating, and other Correlator functions.

## Credits

This page originated and has evolved within the [Laboratory Manuals, Guides, and Resources](#) wiki. See the page history for credits.

## Archived Versions

- Archive PDF files: [Scors\\_correlator\\_ug\\_20161121](#).
- [Correlator QSG - 24022020](#)