
Cary Spectrophotometer: User Guide

Manual Information

Author(s)	E. Moortgat
Reviewer(s)	C. Bennight, M. Bertoli, L. Brandt
Management Approval	D. Houpt, Supervisor of Analytical Systems
Audience	Laboratory Technicians and Scientists
Origination date	12/12/2011
Current version	Version 1.1 (12/16/2013)
Domain	Chemistry (IW)
Analysis	Spectrophotometry

Introduction

The principles of spectroscopic analysis rely on Beer's law. The principle of Beer's law is that passing light of a known wavelength through a sample of known thickness and measuring how much of the light is absorbed at that wavelength will provide the concentration of the unknown, provided that the unknown is in a complex that absorbs significantly at the chosen wavelength.

Beer's law, expressed for liquids, can be represented as an equation, where A = absorbance, k = an experimentally determined constant, b = path length, and c = concentration:

$$A = kbc.$$

Thus, concentration can be determined.

IODP's Agilent Cary 100 double-beam UV-Vis (ultraviolet-visible) spectrophotometer is ideal for shipboard routine and research laboratory work. The system measures analytes in interstitial water obtained from sediment cores using standard colorimetric methodology.

Hardware and Materials

The Varian Cary 100 is a double-beam, dual-chopper, monochromator UV-Vis spectrophotometer, centrally controlled by a PC. It has a high-performance R928 photomultiplier tube, tungsten halogen visible source with quartz window, and deuterium arc ultraviolet source ([Figure 1](#)). More details can be found below.

Name	Agilent Technologies Cary UV-Vis Spectrophotometer
Model	Cary-100
Serial number	UV1110M021
Dimensions	26 × 26 × 13 in (unpacked)
Weight	99 lb (unpacked)
Monochromator	Czerny-Turner 0.28 m
Grating	30 × 35 mm, 1200 lines/mm, blaze angle 8.6° at 240 nm
Beam Splitting System	Chopper (30 Hz)
Detectors	R928 PMT
UV-Vis Limiting Resolution (nm)	0.189
Wavelength Range (nm)	190–900
Wavelength Accuracy (nm)	0.02 at 656.1 nm; 0.04 at 486.0 nm
Wavelength Reproducibility (nm)	0.008
Signal Averaging (s)	0.033–999
Spectral Bandwidth (nm)	0.20–4.00 nm, 0.1 nm steps, motor driven
Spectral Bandwidth Accuracy (nm)	@ 0.2: 0.193; @ 2.0: 2.03
Photometric Accuracy (Abs)	@ 0.3 Abs (Double Aperture method): 0.00016
Photometric Range (Abs)	3.7
Photometric Display	(Abs) ± 9.9999; (%T) ± 200.00
Photometric Reproducibility	(Abs; NIST 930D filters)
2 s signal averaging time @ 590 nm, 2 nm SBW Maximum deviation at 1 Abs Std dev for 10 measurements	<0.0008 <0.00016
2 s signal averaging time @ 546.1 nm, 2 nm SBW Maximum deviation at 0.5 Abs Std dev for 10 measurements	<0.0004 <0.00008
Photometric Stability (Abs/hr) 500 nm, 1 s signal averaging time	2 h warmup <0.0003
Photometric Noise (Abs, RMS) 500 nm, 1 s signal averaging time	2 nm SBW 0.000030 at 0 Abs; 0.00014 at 3 Abs, 1.5 Abs RBA
Baseline Flatness (Abs) 200–850 nm, smoothing = 21, baseline corrected	0.00022
Sample Compartment Beam Separation (mm)	110

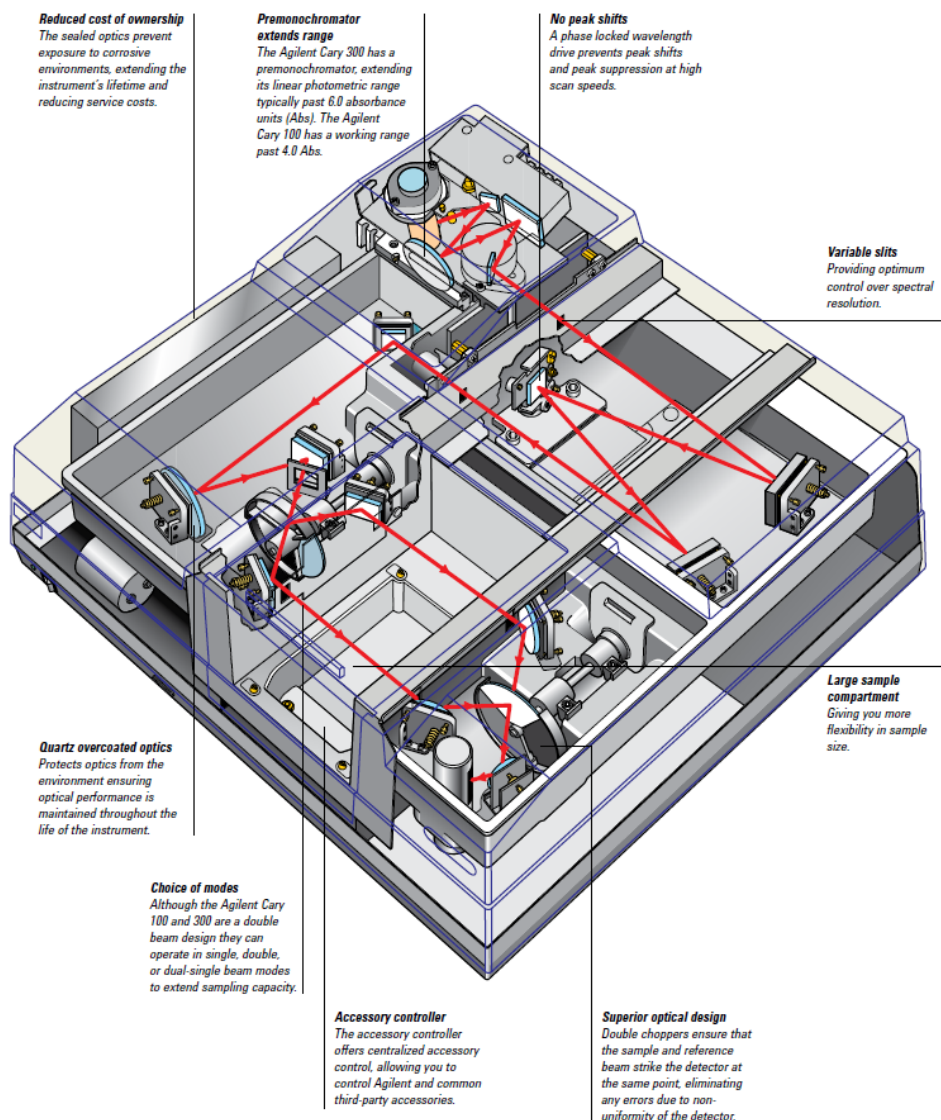


Figure 1. Schematic of Cary Spectrophotometer.

Electrical

Power supply (VAC)	100, 120, 220, or 240 ± 10%
Frequency (Hz)	50 or 60 ± 1 with 400 VA power consumption
Fuses (100–120 VAC)	T5 AH 250 V, IEC 127 sheet 5, 5 × 20 mm ceramic
COM port (rear)	IEEE 488
PC port	USB

Replacement Parts

Item	Part number
Instrument fuse, 5 A time lag, ceramic, M205	1910009100
Peristaltic pump tubing replacement kit	9910052900
Visible source lamp	5610021700
Deuterium lamp	5610021800
Dissolution cell, 715 μ L, 10 mm	6610015200
Thumbscrew kit	9910064100
Spares kit: accessory locating pin, accessory fastening screws, instrument feet, instrument cover snap cap washer, snap cap, ACB cover plate, socket covers for ACB	9910064300

Pumps

A double-action peristaltic pump services the feed and waste (*Figure 2*).

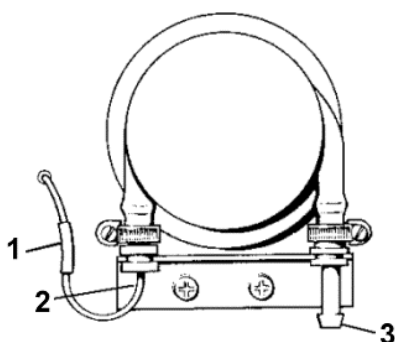


Figure 2. Peristaltic Pump. (1) Plastic Sleeve. (2) Metal Hook Tubing. (3) Waste Outlet.

Computer Control

An external computer workstation provides control, communication, and data analysis.

Software

Agilent provides a full suite of applications for various user requirements; for our needs we use the **Simple Reads** application. **Simple Reads** is used to perform simple absorbance readings of single samples. There is, however, a built-in programming language, Applications Development Language (ADL), which allows complete customization of Cary WinUV to specific applications.

Methods

The described methods are based on ODP Technical Note 15, *Chemical Methods for Interstitial Water Analysis Aboard the JOIDES Resolution*, Aug 1991; J.M. Gieskes, T. Gamo, and H. Brumsack.

Ammonium

Determination of ammonium concentration is of importance because this constituent is an indicator of diagenesis of organic matter in the sediments. The onset of sulfate reduction coincides with initiation of ammonium ion production. Ammonium production increases strongly in the zone of methanogenesis, presumably as a result of associated deammonification reactions. The large potential variation in ammonium concentrations, therefore, suggests that a few preliminary ammonium concentrations should be run in order to set limits to the sample dilution and range of standards to be used. Suggestions for this follow below.

The methodology is based on Solorzano (1969), originally developed to detect very small NH_4^+ concentrations in seawater. Although background contamination problems in seawater are enormous, the relatively high concentrations of ammonium in pore fluids (as high as 85 mM in ODP Leg 112 samples; Kastner et al., 1990) minimizes this problem when matrix blanks are run along with the samples. In areas of low sedimentation, however, very low ammonium concentrations require careful sample handling to avoid this problem.

Laboratory contamination of ammonium samples can also be problematic, and the use or storage of NH_4OH or ammoniated compounds near samples or ammonium method reagents should be done with due caution.

The ammonium method is based on diazotization of phenol and subsequent oxidation of the diazo compound by Chlorox™ to yield a blue color, measured spectrophotometrically at 640 nm.

Reagent Solutions

A: 95% Ethanol (100 mL) – make fresh daily

B: Phenol Solution (100 mL) – make fresh daily

Dissolve 1 mL of liquefied phenol (equivalent to ~800 mg crystalline phenol) in 100 mL Reagent A. If working with crystalline phenol, warm the phenol and deliver 1 mL of liquefied phenol to 100 mL Reagent A. **Note:** phenol is highly toxic and appropriate care should be taken.

C: Sodium Nitroprusside/Sodium Nitroferricyanide Solution (200 mL) – make fresh daily

Dissolve 150 mg sodium nitroprusside ($\text{Na}_2[\text{Fe}(\text{CN})_5\text{NO}]$) in 200 mL nanopure water. **Note:** do not mix sodium nitroprusside with acid, as HCN fumes can be liberated.

D: Alkaline Solution (500 mL) – make fresh monthly

Dissolve 7.5 g trisodium citrate ($\text{Na}_3\text{C}_6\text{H}_5\text{O}_7$) and 0.4 g sodium hydroxide (NaOH) in 500 mL nanopure water.

E: Oxidizing Solution (50 mL) – make fresh daily

Dissolve 1 mL fresh sodium hypochlorite in 50 mL alkaline solution (Reagent D). **Note:** Use sodium hypochlorite or regular strength Chlorox™ bleach. **DO NOT** use Chlorox that contains NaOH, fragrances, or other agents, and do not use another brand of bleach.

F: Ammonium Standard: 0.10 M Ammonium (1000 mL) – make fresh monthly

- Dry ammonium chloride (NH_4Cl) in oven overnight, then dissolve 5.345 g dried NH_4Cl in nanopure water; bring to 1000 mL in a volumetric flask.
- Alternatively, use non-dried NH_4Cl and determine the chloride content of the standard solution by means of chloride titration. For reasonable accuracy, use a 500 μL aliquot ($\text{Cl} = 0.1 \text{ N}$) to obtain almost the same concentration of Cl as in IAPSO reference standard seawater.

Standards

50 mL batches are stable for 1 month. (Note that the 50 μM solution is prepared from the 1000 μM standard, and the rest of the standards are made from the 100 mM primary stock standard.)

Concentration (μM)	Volume of nanopure water (mL)	Volume of Standard (mL)
0	50.00	0
50	47.50	2.50 (dilute from 1000 μM std)
100	49.95	0.05 (dilute from 100 μM std)
200	49.90	0.10 (dilute from 100 μM std)
400	49.80	0.20 (dilute from 100 μM std)
600	49.70	0.30 (dilute from 100 μM std)
800	49.60	0.40 (dilute from 100 μM std)
1000	49.50	0.50 (dilute from 100 μM std)
1500	49.25	0.75 (dilute from 100 μM std)
2000	49.00	1.00 (dilute from 100 μM std)
3000	48.50	1.50 (dilute from 100 μM std)

Procedure

Concentrations of ammonium may differ occur at different sites. Typically in areas with strong evidence of organic carbon diagenesis (e.g., organic carbon-rich sediments), high concentrations of NH_4^+ can be expected. In that case, sample aliquots must be made appropriately small or sample dilution may be required. The range can be established by using a sample near the alkalinity maximum. Once the range has been determined, prepare standards that cover this range. In this manner, samples and standards are treated in a similar way.

The high range of the instrument is 3.0 Absorbance units (Abs). The results are linear up to this point. If the readings are expected to be higher than 3.0 Abs, use a sample volume of 30 μL instead of 100 μL and divide measured concentrations by 0.3 to arrive at the final sample concentration.

Care should be taken to use clean vials, preferably not those used for Si and PO_4 determinations, in which ammonium molybdate is used as a reagent. **Note:** The order of dilution matters, so *do not change this order*. Shake samples after EACH addition.

1. Transfer 100 μL of sample to a 5 mL glass vial.
2. Add 1 mL of reagent water to each vial and shake.
3. Add 500 μL phenol-alcohol solution to each vial and shake.
4. Add 500 μL sodium nitroprusside to each vial and shake.
5. Add 1 mL of oxidizing solution to each vial and shake.
6. Let the color develop for 6.5 hr* and then determine the absorbance at 640 nm wavelength.

*(from a series of measurements over 8 h, it was found that results stabilized after 6.5 hr.)

Phosphate

Determination of dissolved phosphate, particularly in rapidly deposited organic carbon-rich sediments, is important in the shipboard analytical program. Phosphate concentrations may vary considerably, and it is therefore advisable to obtain a preliminary idea of the concentration ranges to be expected. This can most easily be accomplished by taking samples in

the region of maximum alkalinity. Typically if alkalinity is >30 mM, dissolved phosphate concentrations may be >100 μM ; thus, only very small sample aliquots will be needed to establish the concentration range.

This method is, in essence, the colorimetric method from Strickland and Parsons (1968) as modified by Presley (1971) for DSDP pore fluids. Orthophosphate reacts with Mo(VI) and Sb(III) in an acidic solution to form an antimony-phosphomolybdate complex. Ascorbic acid reduces this complex to form a blue color, and absorbance is measured spectrophotometrically at 885 nm.

It is important to note that the concentrations in the final test solution cannot exceed ~ 10 μM . Thus, for open-ocean (low sedimentation rate, low organic carbon) sediments, one might need to do the determination on 2 mL of sample (expected range 0–10 μM), but in typical continental margin settings, where concentrations can exceed 100–200 μM , a 0.1 or 0.2 mL sample aliquot must be used. The concentration range must be established prior to running samples, and it is highly advisable to make standards that cover the range of concentrations to be expected.

Note: Samples with high silica concentrations may give a false increase in measured concentration of phosphate (<http://dx.doi.org/10.1007/BF02071829>; S. Noriki, Silicate correction in the colorimetric determination of phosphate in seawater, 1983).

Reagent Solutions

A: Sulfuric Acid Solution (1000 mL) – stable indefinitely

While stirring, carefully add 10 mL concentrated H_2SO_4 to ~ 600 mL reagent water in a 1000 mL volumetric flask. (**Caution:** Mixing sulfuric acid (H_2SO_4) and water produces heat. Take appropriate precautions.) Allow to cool to room temperature before diluting to 1000 mL with reagent water.

B. Antimony Potassium Tartrate Solution (1000 mL) – make fresh every 2 months; store in amber glass @ 4°C

In a 1000 mL volumetric flask, dissolve 0.102 g of antimony potassium tartrate trihydrate ($\text{KSbC}_4\text{H}_4\text{O}_7 \cdot 3\text{H}_2\text{O}$) in ~ 600 mL of reagent water. (If using antimony potassium tartrate hemihydrate [$\text{KSbC}_4\text{H}_4\text{O}_7 \cdot \frac{1}{2}\text{H}_2\text{O}$], dissolve 0.09 g.) Dilute to 1000 mL with reagent water.

C. Ammonium Molybdate Solution (1000 mL) – stable indefinitely; store in polyethylene @ 4°C

In a 1000 mL volumetric flask, dissolve 2 g of ammonium molybdate tetrahydrate ($[\text{NH}_4]_6\text{Mo}_7\text{O}_{24} \cdot 4\text{H}_2\text{O}$) in ~ 600 mL of reagent water. Dilute to 1000 mL with reagent water.

D. Ascorbic Acid Solution (1000 mL) – make fresh every week; store in amber glass @ 4°C

In a 1000 mL volumetric flask, dissolve 3.5 g of ascorbic acid ($\text{C}_6\text{H}_8\text{O}_6$) in ~ 600 mL reagent water. Dilute to 1000 mL with reagent water. **Note:** If the reagent is discolored upon creation, the dry ascorbic acid is probably oxidized and must be replaced.

E. Mixed Reagent (250 mL) – make fresh every 6 hours

Add the following solutions to an appropriate container. Do not add the ascorbic acid reagent until immediately before use. *Mix well after each addition to prevent the solution from darkening.*

Solution	Volume (mL)
Ammonium molybdate (Reagent C)	50
Sulfuric acid (Reagent A)	125
Ascorbic acid (Reagent D)	50
Antimony potassium tartrate (Reagent B)	25

F. Primary Standard: 0.01 M Phosphorus (1000 mL) – make fresh every 4 weeks; store @ 4°C

Dry potassium phosphate monobasic (KH_2PO_4) in oven at 100°C for 2 hr; keep in a desiccator while it cools before weighing.

In a 1000 mL volumetric flask, dissolve 1.3614 g oven-dried KH_2PO_4 in ~600 mL reagent water, then dilute this solution to 1000 mL with reagent water.

Standards

Concentration (μM)	Volume of primary standard (mL)	Volume of reagent water (mL)
0	0	100
5.0	0.050	99.95
10.0	0.100	99.90
15.0	0.150	99.85
20.0	0.100	49.90
40.0	0.200	49.80
60.0	0.300	49.70
80.0	0.400	49.60
100	0.500	49.50
200	1.000	49.00
300	1.500	48.50

Procedure

1. Add 1 mL nanopure water to a 4 mL glass vial.
2. Add 0.3 mL sample or standard.
3. Add 2 mL mixed reagent.
4. Shake well.
5. After a few minutes a blue color develops, which remains stable for a few hours. It is best to make the readings at 885 nm ~30 min after addition of the mixed reagent.

Silica

Note: Silica is routinely measured on the ICP, so measurement by spectroscopic analysis is an alternate method.

Dissolved silica determinations are of great importance in interstitial waters. Often they represent the lithology of the sediments, and the concentrations can vary substantially, especially if highly dissolvable phases such as biogenic opal-A, volcanic ash, or smectite are present. Thus, a wide range of concentrations can be expected, typically from 50 to 1200 μM or higher (especially in hydrothermally affected sediments). The method below usually covers the range, although greater dilutions may be appropriate if sediments or sample sizes necessitate this.

This method is based on the production of a yellow silicomolybdate complex. The complex is reduced by ascorbic acid to form molybdenum blue, measured at 812 nm. The blue complex is very stable, which will enable delayed reading of the samples.

Reagent Solutions

A: Sulfuric Acid Stock Solution (500 mL) – make fresh every month; store in polyethylene

Slowly pour 250 mL of concentrated analytical-grade sulfuric acid into a 500 mL volumetric flask containing ~300 mL of reagent water. (**Caution:** Mixing concentrated sulfuric acid (H_2SO_4) and water produces heat. Take appropriate precautions.)

Allow to cool to room temperature before diluting to 500 mL with reagent water.

B. Ammonium Molybdate Tetrahydrate Solution (500 mL) – make fresh every month; store in dark polyethylene @ 4°C

In a 500 mL volumetric flask, dissolve 4 g of ammonium molybdate tetrahydrate ((NH₄)₆Mo₇O₂₄·4H₂O) in ~300 mL of reagent water. Add 12 mL of concentrated (12 N) hydrochloric (HCl) acid, mix, and make up to 500 mL with reagent water.

Note: If a white precipitate forms, make fresh reagent.

C: Metol Sulfite Solution (500 mL) – make fresh every month; store in amber glass, tightly sealed, @ 4°C

Dissolve 6.0 g anhydrous sodium sulfite, Na₂SO₃, in a 500 mL volumetric flask. Add 10 g Metol (p-methylaminophenol sulfate [(C₇H₁₀NO)₂SO₄]) and then reagent water to make the volume to 500 mL. When the Metol has dissolved, filter the solution through a Whatman No. 1 filter paper. **Note:** This solution may deteriorate quite rapidly and erratically.

D: Oxalic Acid Solution (500 mL) – make fresh every month; store in glass

In a 500 mL volumetric flask, dissolve 50 g of analytical-grade oxalic acid dihydrate [(C₂H₄O₂)·2H₂O] with ~300 mL of reagent water. Shake well and bring to 500 mL volume with reagent water. Let stand overnight. Decant solution from crystals before use.

E: Reducing Solution (150 mL) – make fresh daily, just before using

Mix 50 mL Reagent C (Metol solution) with 30 mL Reagent D (oxalic acid solution). Add slowly, with mixing, 30 mL Reagent A (50% sulfuric acid solution) and bring volume to 150 mL with reagent water.

F: Synthetic Seawater (1000 mL) – make fresh monthly; store in polyethylene

In a 1000 mL volumetric flask dissolve 25 g sodium chloride in ~800 mL reagent water, then add 8 g magnesium sulfate heptahydrate (MgSO₄·7H₂O). Dilute to 1000 mL with reagent water.

G. 3000 µM Silica Primary Standard (1000 mL) – make fresh every 2 months; store in polyethylene

Note: When sodium silicofluoride (Na₂SiF₆) is dissolved in water, it hydrolyzes to form reactive dissolved silica. Place ~1 g of Na₂SiF₆ in an open vial and place in a vacuum desiccator overnight to remove excess water. Do not heat.

In a 1000 mL polyethylene volumetric flask, dissolve 0.5642 g dried sodium silicofluoride in ~800 mL reagent water. Dissolution is slow; allow at least 3 minutes. Dilute the solution to 1000 mL with reagent water.

Standards

Using a 50 mL volumetric flask, add the following amounts of primary standard to approximately 30 mL of reagent water and then bring to a total of 50 mL. Store in polyethylene containers.

Concentration (µM)	Volume of primary standard (mL)
30	0.5
60	1.0
120	2
240	4
360	6
480	8
600	10
900	15
1200	20

Procedure

Make sure that all reagents are prepared ahead of time. The method has a time factor built in, and therefore it is of great importance to have all necessary reagents ready to go.

1. Label 3 dram (15 mL) plastic vials (well washed with reagent water).
2. Measure 4 mL of reagent water into the vials (3.8 mL for standards and blanks).
3. For standards and blanks, pipette 200 μ L of synthetic seawater into the vials.
4. Pipette 200 μ L of sample or standard or blank (reagent water) into the vials.
5. Record time.
6. Add 2 mL of molybdate solution to the vials. A yellow color will develop; allow to mature for exactly 15 minutes (\pm 15 s).
7. Add 3 mL of the reducing solution.
8. Cap the vials and let stand for at least 3 hours.
9. Read absorbances on the spectrophotometer at 812 nm.

Procedure notes

- Do not handle more than about 30 samples at a time in order to ensure that the 15 min time limit can be adhered to. Make sure that there are no fluctuations in room temperature.
- Do not use synthetic seawater in dilutions of the primary standard. This could cause the decrease in reactive silica in a few hours as a result of polymerization reactions.
- The reason for adding 200 μ L of synthetic seawater to the standards is to maintain a reasonably uniform salt content in relation to the samples, this suppressing a potential salt effect on the method.
- It is important to wait at least 3 hr for the blue color to develop; the higher the concentration, the longer the time. The color remains stable for many hours, and reading after 4–5 hr may, in fact, be a good idea. Again, consistency in time limits is advisable.

Analyzing Samples

Preparing the Instrument

1. Engage the tubing on the peristaltic pump. Make sure that the waste line goes into a receptacle.
2. Turn on the unit and let it warm up for at least 2 hr.
3. Confirm that the instrument Beam Mode is correctly configured. This shouldn't change, but to confirm, in *Varian > Cary WinUV* start the **Advanced Read** application. Click the **Setup** button and select the **Options** tab. Confirm in the *Beam Mode* area that *Double Beam* is selected and *Normal* is also selected. (**Figure 3**)
4. To start the measuring computer application, select *Varian > Cary WinUV > Simple Reads*.
5. Clean the 'fill' tubing with a Kimwipe and aspirate DI water a couple of times, without returning. This is done by depressing the **fill** button on the front of the Cary unit. (**Figure 4**)

Note: The **Simple Reads** application must be running to be able to operate the fill/return features on the Cary unit.

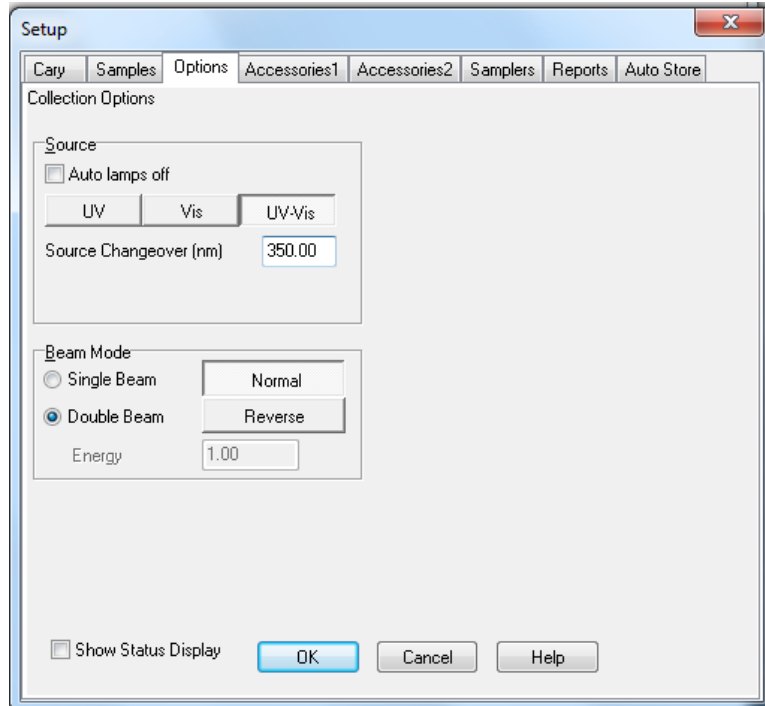


Figure 3. Setup Screen.

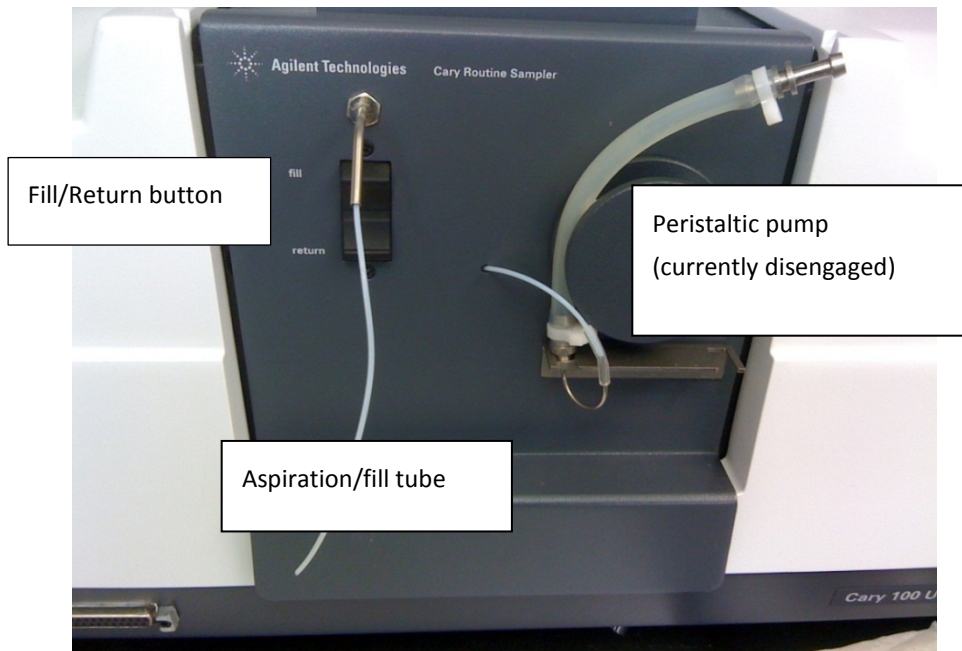


Figure 4. Peristaltic Pump.

Running Samples

Preparing Samples

Prepare samples according to the requirements outlined in the appropriate analyte method.

Setting up Instrument Parameters

1. Click the **Setup** button to display the Setup dialog box (**Figure 5**).
2. Select **Read at Wavelength** and enter the wavelength for the analysis along with 1 s measurement time.
2. Click **OK**. The new wavelength is shown in the Abscissa status display at the top right of the application window.
3. To zero the current ordinate value, click the **Zero** button at the left side of the screen. This is best done after aspirating with nanopure water a few times. Do not re-zero the instrument during a measurement batch run.
4. In the **Y Mode** group, select the ordinate mode required (**Abs**).
5. To clear the contents (text) of the *Report* area, click on the **Clear report** button.

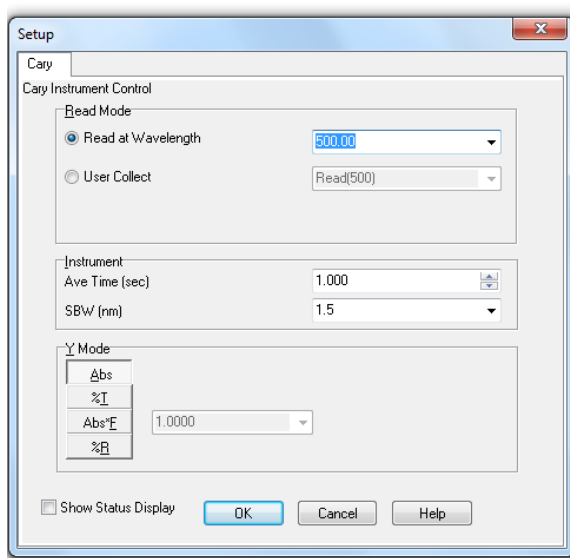


Figure 5. Setup Dialog Box.

Measuring the Samples

1. Insert the aspiration tube completely into the sample vial.
2. Depress the **fill** button on the front of the Cary. Make sure that the peristaltic pump aspirates the liquid.
3. Monitor the absorbance value in the top left (above the **Setup** button) of the application window. When the value stabilizes, click the **Read** button to measure the sample at the specified wavelength.
4. The result of the sample read appears in the **Report** area and includes the ordinate reading obtained and the wavelength at which the reading was measured (**Figure 6**).
5. Depress the return button on the front of the unit to return the aspirated sample to the sample container for further analysis if required.
6. Remove the aspiration tubing from the sample vial and wipe clean with a Kimwipe.
7. Aspirate Nanopure water in between samples to flush out the line.
8. Continue sample readings. Once all samples have been read, the data can be saved and/or printed.
10. Click on the **Print...** button to display the *Windows Print* dialog box to choose the printer and pages to print of

the current displayed report (*Figure 7*).

11. To save data, select **Save Data As...** from the top **File** menu option. Save the data in an RTF format.
12. This file may be opened in Excel, using space-delimited option, and formatted per the requirements of the **LIMS** Integration section (i.e., text ids, analytes, and concentrations will have to be added).

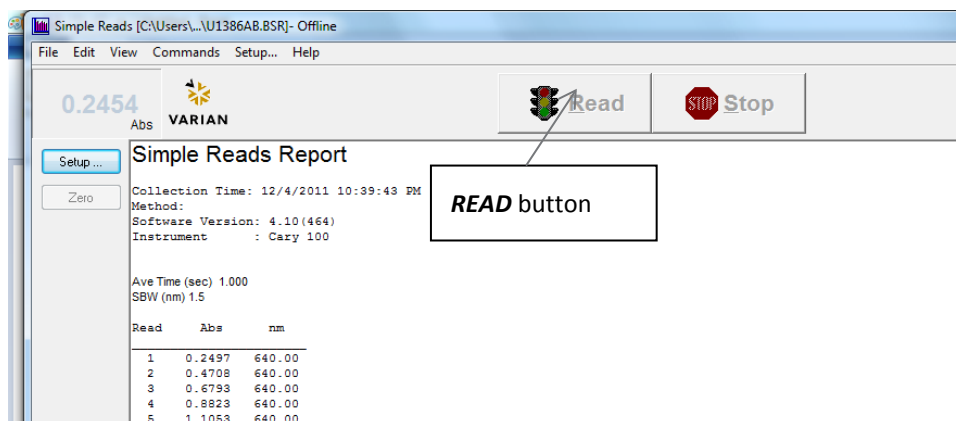


Figure 6. Measuring Samples.

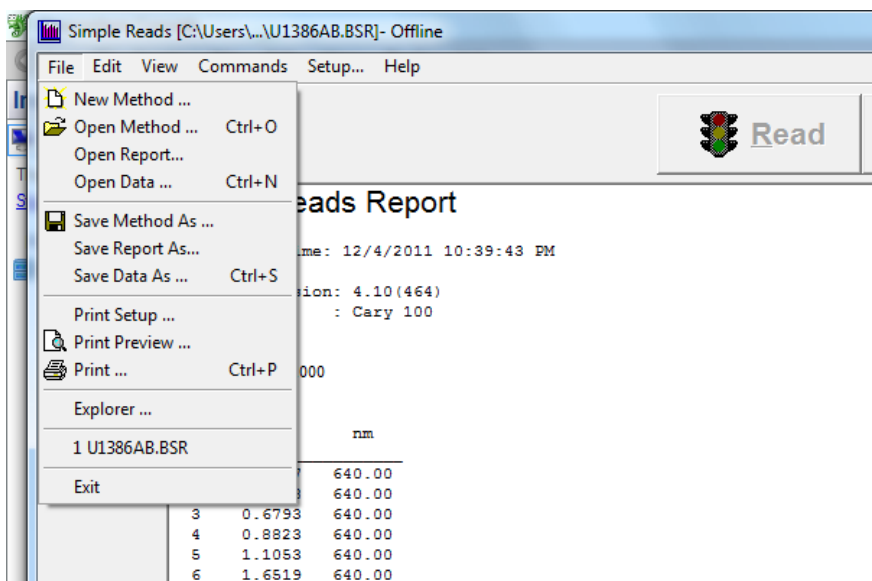


Figure 7. Print/Save Samples.

Data Analysis

Using the results from the reads of the standards, create a calibration curve from the plot of the concentration vs. absorbance values. Use this equation to extrapolate the sample concentrations from their corresponding absorbance value. This can be done in the same spreadsheet as created above in the *Simple Reads* application. This sheet can be loaded into the *LIMS Spreadsheet Loader* application as outlined in the LIMS Integration section.

Shutting down the Instrument

Aspirate a few cycles of nanopure water, release the tubing on the peristaltic pump, turn off power to the unit, and exit from the software. Clean any spills that may have occurred.

QAQC

QA/QC for analysis consists of calibration verification using check standards, blanks and replicate samples.

QA/QC Samples

Check Standard

A check standard for each set of analytes is run every 20–50 analyses depending on batch size. Check standards consist of a standard from approximately the midpoint of the calibration curve.

The check standard result is evaluated against the threshold for % variance limits for calibration verification standard against true value:

Within $\pm 10\%$: calibration is verified and sample analysis can continue.

Outside of $\pm 10\%$: check reagent solutions and rerun all samples in the corresponding analytical batch.

Blank

A blank is run with every batch to determine if high background levels are interfering with accurate sample results.

Replicate Samples

During each batch, a single sample should be run in duplicate and the variation of the results compared.

Control Limits

Each QA/QC sample has one the following results:

In control

Exceeds warning limit

Out of control (exceeds control limit)

For a system to be considered in control, all QA/QC samples (blank, calibration verification, and replicate samples) must be in control.

In Control

A QA/QC sample is in control when the sample analysis result is within a certain tolerance of acceptable limits (usually 1 standard deviation from the mean). Calibration verification samples should be within acceptable limits of the actual value of the check standard, blanks should be within acceptable limits of background levels of the particular analyte, and replicate samples should be within acceptable limits of duplicate results. When the system is in control, as indicated by acceptable results on QA/QC samples, analytical results for unknown samples are considered to be reliable.

Warning Limit

When QA/QC samples exceed the warning limits (generally 2 standard deviations from the mean), the system is considered to be in danger of being “out of control” (but is not yet out of control). The operator can continue the analysis if he or she does not think that the control limit will be exceeded.

Out of Control

If the control limits are exceeded (generally 3 standard deviations from the mean), the instrument system is considered out of control and all samples in the current analytical batch are invalid and must be rerun after the system is proved to be in control.

LIMS Integration

Results are stored in the LIMS database associated with an analysis code and an analysis component.

Analysis	Component Name	Component value	Unit
SPEC	analyte	ammonium	—
		phosphate	
		silica	
	concentration	<i>concentration of analyte</i>	mM

Data collected is transferred to the LIMS database using IODP's *Spreadsheet Loader* application. This is best done by entering the results into an Excel spreadsheet in a format similar to the pattern below, keeping the appropriate number of columns blank, and omitting the column headers. Then run the Spreadsheet Loader application. Go to **File > Load** and it should import something like below. To upload into the database, go to **Lims > Upload** and status messages will appear in the blank window (*Figure 8*).

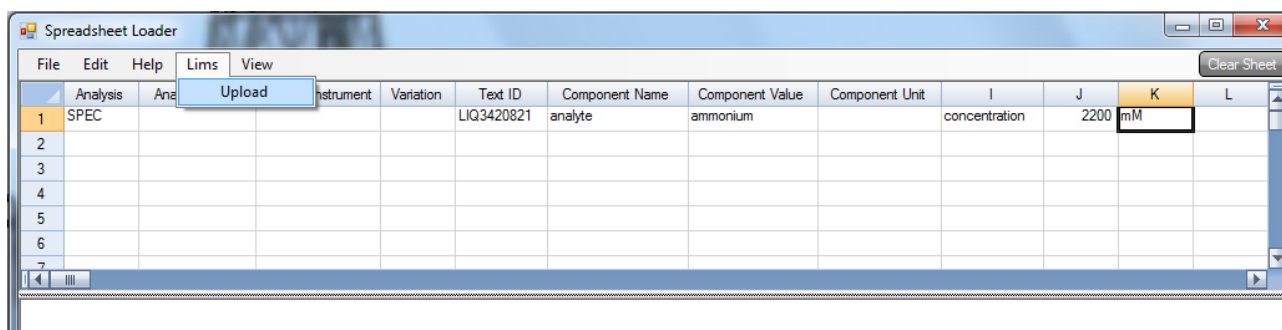


Figure 8. Uploader.

Maintenance and Troubleshooting

Cleaning

Any spills in the sample compartment should be immediately wiped up and any deposits on the sample compartment windows should also be removed.

The exterior surfaces should be cleaned with a soft cloth and, if necessary, this cloth can be dampened with water or a mild detergent.

Source Lamps

Instructions for how to change and align both the visible and UV lamps are included in the Help provided with the software.

Care must be taken when removing lamps. Touching the glass envelope will reduce its efficiency. NEVER touch the glass surface of a new lamp. Always handle a lamp by its base, using a soft cloth.

Fuses

To replace a fuse, disconnect the unit from the power supply, and replace the blown fuse with one of the type and rating as outlined in the hardware specifications section.

1. Disconnect the instrument from the power supply.
2. Undo the fuse cap by pressing the cap and turning it counter-clockwise.
3. Carefully pull out the cap. The fuse should be held in the fuse cap.

4. Check that the fuse is the correct type and is not damaged. If necessary, replace it.
5. Place the fuse into the cap, push the cap in and then turn the cap clockwise.
6. Reconnect the instrument to the power supply.

Flowcells

It is important to inspect the flowcell regularly and ensure that it is kept clean and free from bubbles. If the cell is not clean, or if air bubbles are allowed to remain in the cell, the analytical results may be wrong, and the zero position may drift.

A. To clean a flowcell:

1. Prepare a general wetting solution of Tween80 in water (5%–10% v/v) and run this solution through the cell at regular intervals. If the routine sampler is not to be used for an extended period this wetting solution should be pumped into the flowcell to keep all tubes and cell walls coated. The system should be *thoroughly* rinsed (>20–30 fills/returns) with distilled water immediately before use.
2. If a stronger treatment is required a solution of KOH in methanol can be used (~1 N KOH). Rinse the system briefly with this solution and thoroughly flush with distilled water. Do not leave the KOH/methanol in contact with the cell for long periods.

B. To remove air bubbles:

1. Purge the cell completely with air several times.
2. Flush the cell thoroughly with Tween80 solution or KOH/methanol solution. Rinse thoroughly with distilled water.
3. Flush the cell *thoroughly* as in Step A above before using the cell.

Cary Win UV Help

Varian provides extensive help resources, available from the software CD. After installing the help utilities, go to *START > All Programs > Varian > Cary WinUV > Cary Help*.

Cary Help offers troubleshooting information, maintenance information like how to replace lamps, aligning lamps and mirrors, and replacing fuses and cleaning the flowcells.

Contact Information

Sales and Service
 Varian Instruments
 2700 Mitchell Dr.
 Walnut Creek, CA 94598
 Phone: 1 800 926 3000
 E-mail: customer.service@varianinc.com

Health & Safety

Ultraviolet Radiation

The **deuterium** in the instrument emits hazardous ultraviolet radiation that can cause serious damage to eyes. NEVER look directly at the lamp.

Ozone can be generated by radiation from the source lamp. Exposure to ozone can result in severe radiation damage to the skin, eyes, and upper respiratory system. The maximum permissible exposure level is 0.1 ppm.

Electrical Hazards

The Cary instrument contains electrical circuits, devices, and components operating at dangerous voltages. Contact with these circuits, devices, and components can cause death, serious injury, or painful electrical shock.

Operators are permitted access only to the lamp compartment and the sample compartment. Always switch the unit off before changing a lamp.

Good grounding is essential to avoid a potentially serious electric shock hazard. Ensure that there is an integral ground connection between the metal base and the three pin earth-grounded receptacle.

Do not connect the instrument to the mains supply until you have made sure that the slide switch at the rear of the unit is correctly set for the mains power supply in the specific outlet in the lab to which the equipment will be connected.

Replace blown fuses with fuses of the size and rating as stipulated in the text adjacent to the fuse holder or in the manual.

Note: The safety classification is given as Equipment Class I.

Other

Both the deuterium and visible lamps operate at high temperatures and touching either of these lamps may result in burns. Before replacing a lamp that has been lit, switch off the unit and either ensure that the lamp has cooled or protect your fingers from burns.

Do not block the ventilation grills on the spectrophotometer.

Chemical Safety

Note: Before working with any of these chemicals, read and become familiar with the MSDS.

Ammonium Chloride

Health effects

Inhalation: irritant

Ingestion: irritant

Contact: irritant

Incompatible materials

Concentrated acids, strong bases, silver salts, potassium chlorate, ammonium nitrate, hydrogen cyanide

Ammonium Molybdate Tetrahydrate

Health effects

Inhalation: irritant

Ingestion: irritant

Contact: irritant

Incompatible materials

Alkali metals

Antimony Potassium Tartrate

Hazards

Poison

Health effects

Inhalation: irritant

Ingestion: toxic

Contact: irritant

Incompatible materials

Alkali metals and their carbonates, perchloric acid, reducing agents

Ascorbic Acid

Health effects

Inhalation: mild irritant
Ingestion: mild irritant
Contact: mild irritant

Incompatible materials

Strong oxidizers, alkalis and alkali hydroxides, iron, copper

Bleach (Sodium Hypochlorite)

Health effects

Inhalation: irritant
Ingestion: irritant
Contact: irritant

Stability

Decomposes in air and sunlight

Incompatible materials

Ammonia, amines, ammonium salts, methanol, cellulose, oxidizable metals, acids, soaps, bisulfates

Disposal

Dilute and flush down drain

Ethanol

Hazards

Flammable

Health effects

Inhalation: irritant
Ingestion: irritant
Contact: irritant

Incompatible materials

Oxidizing agents, acids, alkali metals, ammonia, peroxides, silver nitrate

Hydrochloric Acid

Hazards

Poison, corrosive

Health effects

Inhalation: corrosive, may be fatal
Ingestion: corrosive, may be fatal
Contact: corrosive, may cause permanent damage

Incompatible materials

Strong bases, metals, metal oxides, hydroxides, amines, carbonates, alkaline materials and strong nitric acid.

Environmental hazard

Toxic to aquatic life

Disposal

Neutralize

Magnesium Sulfate heptahydrate

Health effects

Inhalation: minor irritant
Ingestion: minor irritant
Contact: minor irritant

Stability

Stable but loses some moisture on exposure to dry air at room temperatures

Incompatible materials

Ethoxy ethyl alcohols, arsenates, phosphates, tartrates, lead, barium, strontium, calcium

Metol (p-Methylaminophenolsulfate)

Hazards

Combustable, toxic, possible sensitizer

Health effects

Inhalation: harmful
Ingestion: harmful
Contact: harmful

Incompatible materials

Strong oxidizing agents, acids, acid halides

Disposal

Very toxic to aquatic organisms, moderately biodegradable in soil and water

Oxalic Acid

Hazards

Poison, corrosive

Health effects

Inhalation: may cause severe burns
Ingestion: toxic, may be fatal
Contact: may cause severe burns

Stability

May become unstable under heat

Incompatible materials

Alkalis, hypochlorites, oxidizers, silver compounds

Phenol

Hazards

Carcinogen

Health effects

Inhalation: slightly hazardous, non-corrosive for lungs
Ingestion: VERY hazardous
Contact: VERY hazardous
Skin contact: corrosive, sensitizer, permeator
Eye contact: corrosive

Stability

Stable but air and light sensitive

Incompatible materials

Oxidizing agents, metals, acids, alkalis

Potassium Phosphate, Monobasic

Health effects

Inhalation: irritant

Ingestion: irritant

Contact: irritant

Sodium Chloride

Health effects

Inhalation: mild irritant

Ingestion: mild irritant in large doses

Contact: irritant with eye contact

Incompatible materials

Lithium, bromine trifluoride

Sodium Sulfite

Health effects

Inhalation: mild, cough, sore throat

Ingestion: mild

Contact: mild

Stability

Stable

Incompatible materials

Strong acids and oxidants

Sodium Nitroprusside

Hazards

Toxic

Health effects

Inhalation: toxic

Ingestion: toxic, may be lethal

Contact: irritant

Stability

Hygroscopic

Incompatible materials

Strong oxidizers, strong acids

Sodium Silicofluoride

Hazards

Toxic

Health effects

Inhalation: toxic
Ingestion: toxic
Contact: irritant

Incompatible materials

Metals

Environmental hazard

Highly toxic to foliage

Sulfuric Acid

Hazards

Poison, danger, corrosive

Health effects

Inhalation: strong irritant
Ingestion: corrosive, may be fatal
Contact: corrosive, may cause severe burns

Stability

Reacts violently with water

Incompatible materials

Water, potassium chlorate, potassium perchlorate, potassium permanganate, sodium, lithium, bases, organics, halogens, metals, strong oxidizers, reducers

Environmental hazard

May be toxic to aquatic life

Disposal

Neutralize

Trisodium Citrate

Health effects

Inhalation: irritant
Ingestion: irritant
Contact: irritant

Incompatible materials

Strong oxidizers

Tween®80

Health effects

Inhalation: may cause respiratory tract irritation
Ingestion: may cause digestive tract irritation
Contact: may cause eye/skin irritation

Stability

Stable but avoid excess heat

Incompatible materials

Strong oxidizing agents, bases, heavy metal salts

Guidelines for Handling Chemicals

- Wear gloves to protect from specific hazards.
- Wash hands immediately after removing gloves, after handling chemical agents, and before leaving the laboratory area.
- Wear laboratory coats and gloves only in the laboratory area.
- Confine long hair and loose clothing.
- Wear close-toed shoes.
- Do not store or prepare food, eat, drink, chew gum, apply lip balm or cosmetics, or handle contact lenses in areas where chemicals are handled.
- Label all chemical containers and reagent solution bottles.
- Keep laboratory work areas clean and uncluttered.
- Consult the MSDS before using any chemical.
- Know the emergency procedures for handling chemicals used.
- Vent into local exhaust devices vapors, fumes, mists, dusts, or gases.

Waste Management

Waste management includes proper handling of reaction byproducts, surplus and waste chemicals, and contaminated materials. Each worker is responsible for ensuring wastes are handled in a manner that minimizes personal exposure and the potential for environmental contamination.

Dispose of cleaning solutions properly.

Dispose of surplus and expended reagents properly.

Select the least hazardous chemical for the job and use only in quantities needed. Minimize waste whenever possible by reducing both the volume and physical hazard or toxicity of the material.

References

- Gieskes, J.M., Gamo, T., and Brumsack, H., 1991. Chemical methods for interstitial water analysis aboard *JOIDES Resolution*, *ODP Tech. Note*, 15. doi:10.2973/odp.tn.15.1991.
- Kastner, M., Elderfield, H., Martin, J.B., Suess, E., Kvenvolden, K.A., and Garrison, R.E., 1990. Diagenesis and interstitial water chemistry at the Peruvian margin—major constituents and strontium isotopes. *In* Suess, E., von Huene, R., et al., *Proc. ODP, Sci. Results*, 112: College Station, TX (Ocean Drilling Program), 413–440. doi:10.2973/odp.proc.sr.112.144.1990
- Noriki, S. 1983. Silicate correction in the colorimetric determination of phosphate in seawater. *J. Oceanograph. Soc. Japan*, 39(6):324–326. doi:10.1007/BF02071829
- Presley, B.J., 1971. Techniques for analyzing interstitial water samples: Appendix Part 1: determination of selected minor and major inorganic constituents. *In* Winterer, E.L., et al., *Init. Repts. DSDP*, 7(2): Washington, DC (U.S. Govt. Printing Office), 1749–1755. doi:10.2973/dsdp.proc.7.app1.1971
- Solorzano, L., 1969. Determination of ammonia in natural waters by phenol-hypochlorite method. *Limnol. Oceanogr.*, 14:799–801.
- Strickland, J.D.H., and Parsons, T.R., 1968. A manual for sea water analysis. *Bull. Fish. Res. Board Can.*, 167.

Appendix

Reagent Cheat Sheet

Ammonium					
Reagent	Total volume (mL)	Solute(s)	Amount added	Solvent	When
A (ethanol)	100	95% Ethanol	100 mL	NA	Daily
B (phenol)	100	Phenol	1 mL	Reagent A	Daily
C (Na-nitro)	200	Na nitroprusside <i>or</i> Na nitroferricyande	150 mg	Nanopure H ₂ O	Daily
D (alkaline)	500	Trisodium citrate NaOH	7.5 g 0.4 g	Nanopure H ₂ O	Monthly
E (oxidizing)	50	Sodium hypochlorite (bleach)	1 mL	Reagent D	Daily
F (stock std)	1000	NH ₄ Cl (dried)	5.345 g	Nanopure H ₂ O	Monthly
Phosphate					
Reagent	Total volume (mL)	Solute(s)	Amount added	Solvent	When
A (H ₂ SO ₄)	1000	H ₂ SO ₄	10 mL	Reagent H ₂ O	Any
B (An-K-Tar)	1000	Antimony potassium tartrate trihydrate	0.102 g	Reagent H ₂ O	2 months
C (Am-Mo)	1000	Ammonium molybdate tetrahydrate	2 g	Reagent H ₂ O	Any
D (ascorbic)	1000	Ascorbic acid	3.5 g	Reagent H ₂ O	Weekly
E (mixed)	250	Reagent C Reagent A Reagent B Reagent D	50 mL 125 mL 25 mL 50 mL	None	6 hours
F (stock std)	1000	KH ₂ PO ₄ (dried)	1.3614 g	Reagent H ₂ O	4 weeks
Silica					
Reagent	Total volume (mL)	Solute(s)	Amount added	Solvent	When
A (H ₂ SO ₄)	500	H ₂ SO ₄	250 mL	Reagent H ₂ O	Monthly
B (Am-Mo)	500	Ammonium molybdate tetrahydrate	4 g	Reagent H ₂ O	Monthly
C (Metol)	500	Na ₂ SO ₃ Metol	6.0 g 10 g	Reagent H ₂ O	Monthly
D (oxalic)	500	Oxalic acid dihydride	50 g	Reagent H ₂ O	Monthly
E (reducing)	150	Reagent C Reagent D	50 mL 30 mL	Reagent H ₂ O	Daily
F (SSW)	1000	NaCl MgSO ₄ ·7H ₂ O	25 g 8 g	Reagent H ₂ O	Monthly
G (stock std)	1000	Na silicofluoride (dried)	0.5642 g	Reagent H ₂ O	2 months