

DTech AF Demagnetizer User Guide

- Introduction
- Procedure
 - Turning on the instrument
 - Loading samples
 - Start the Application
 - Create Demagnetization Sequence
 - Demagnetizing Specimens
 - PARM
 - ARM
 - Miscellaneous



| | |
|--------------------------|--|
| Author: | G. Matson, B. Novak |
| Reviewer(s): | |
| Editor(s): | |
| Lab Officer: | T. Bronk |
| Audience: | Scientists, Technicians |
| Origination date: | 05/14/2013 |
| Current version: | 03/01/2018 |
| Revised: | |
| Domain: | Paleomagnetism |
| System: | Dtech Computer |
| Keywords: | Cube, Discrete Samples, ARM, pARM, Demag |

Introduction

This manual is aimed to help scientists and technicians correctly use the D-2000 A.F. Demagnetizer. It is a very helpful tool in that it demagnetizes discrete samples in fields up to 200 mT, whereas the cryogenic magnetometer can only go as high as 80 mT. In addition, the D-2000 can impart an ARM or pARM onto discrete samples.

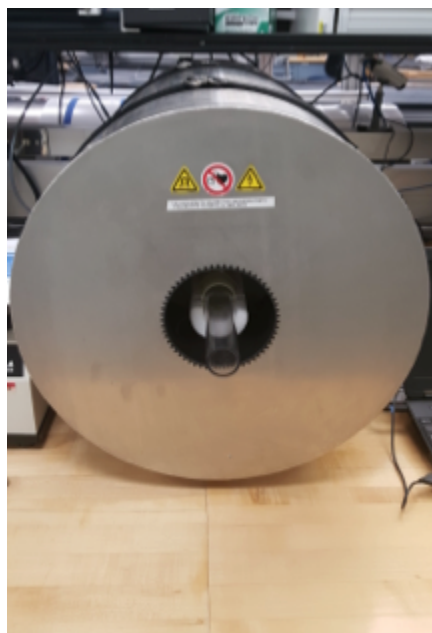


Figure 1: Dtech in the Paleomag Lab.

Procedure

Turning on the instrument

1. Power on the Dell Laptop that is connected via serial cable to the D-2000.
2. Log in to the system using the username daq and password daq
3. Power on the D-2000 Power source (easiest access is gained by reaching over the SRM). The switch is on the back of the box.
 - a. The D-2000 control box is a grey and black box with ASC scientific D2000 A.F. Demagnetizer written on the front and is positioned in the center of the paleomagnetism lab.
4. Power on the D-2000 amplifier.
 - a. The amplifier is located below the D-2000 power source in the middle of the paleomagnetism lab.
5. Slowly turn Channel A and B on the amplifier from -80 dB to 0 dB simultaneously.
6. Open the D2000 software on the Dell Laptop
 - a. The red LED power light should now be on steady on the Dtech control box
7. In the upper control bar, select the units you wish to use (typically use mT)

*Note: If this sequence is not followed the software may give a warning indicating that there is no communication between the computer and the instrument. To avoid this issue, turn on the laptop before the D2000 power source.

Loading samples

1. Remove clear sample holder tube from Demagnetizer.
2. Place cubes into holder, as seen in Figure 2 below. Make sure they have consistent orientation. The user can repeat the process in multiple orientations if desired.
3. Push the clear tube into the Demagnetizer so that the pegs rest on the foam support and are against the inner tube.



Figure 2: Placing samples into the Demagnetizer.

Start the Application

1. Double click the D-2000 icon on the desktop of the Dtech computer. The application will launch. (Figure 3).
2. On the top tool bar, select which unit you prefer to use (mT, Oe, or T). This unit will now be displayed on the top loading bar denoted "Field Intensity."

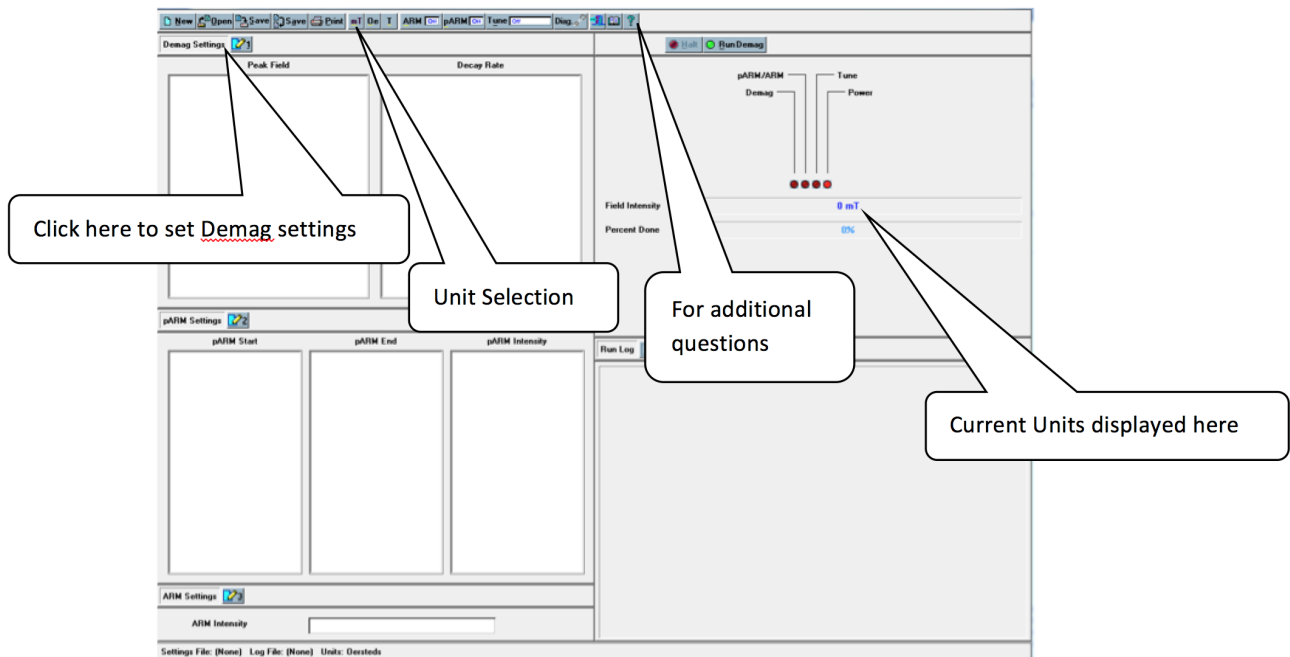


Figure 3: D-2000 Main Screen

Create Demagnetization Sequence

To create a list of demagnetization steps, click the number 1 button next to the "Demag Settings" option. The Demagnetization Settings window will open. (Figure 4).

- If a list of demagnetization steps has already been created and saved, it may be opened by selecting the **OPEN** button at the top of the D2000 main window.

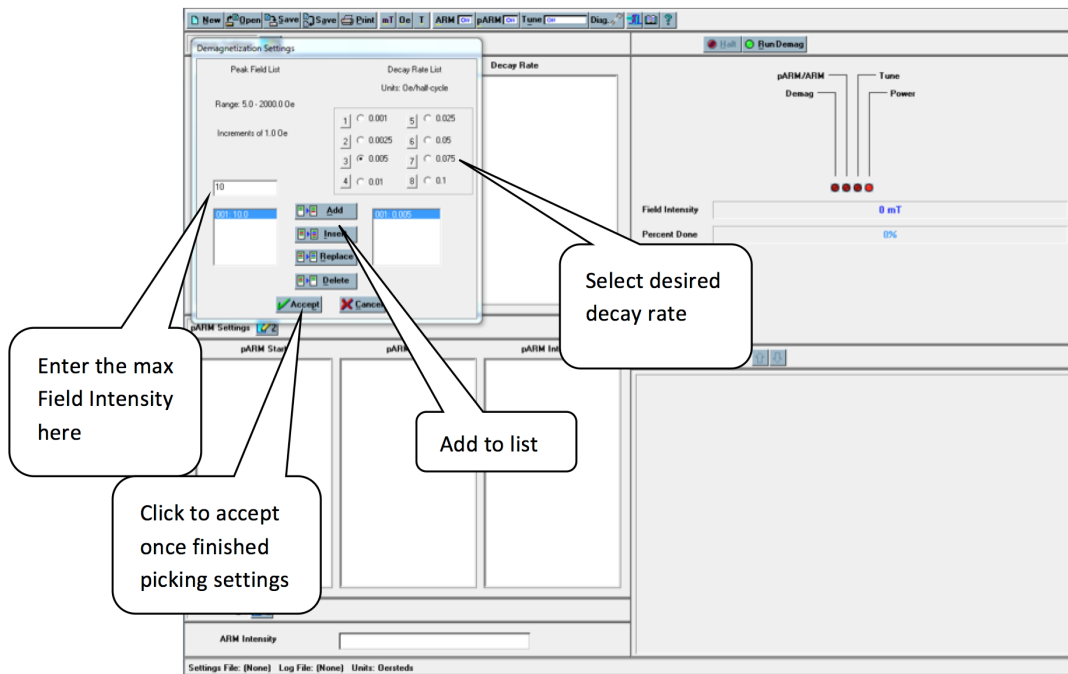


Figure 4: Demagnetization settings

1. In the space below "Peak Field List", type what intensity of field you want to demagnetize with – i.e. if you want a 10 mT field, type "10".
2. Select the decay rate under "Decay Rate List". **Note:** It is possible to get errors during demagnetization when a decay rate that is too low is paired with a field intensity that is too high. If this error occurs, simply increase the decay rate for the desired intensity and redo the demagnetization step.
3. Click the **Add** button to add a step to the demagnetization set.
 - a. The selected field will appear in the box on the bottom left of the Demagnetization settings window and the decay rate will appear on the bottom right. Add all steps you wish to use.
4. Click the **Accept** button at the bottom of the box when finished. The demagnetization settings will be displayed on the main window. It is possible to delete an entry or add others to the list after clicking accept. Simply select the number **1** again and edit the list as needed.

Demagnetizing Specimens

1. Place samples in Dtech sample holder and place the holder into the Dtech.
2. Select the demagnetization field you wish to use from the Peak Field list. Make sure that both pARM and ARM are off. (Figure 5).

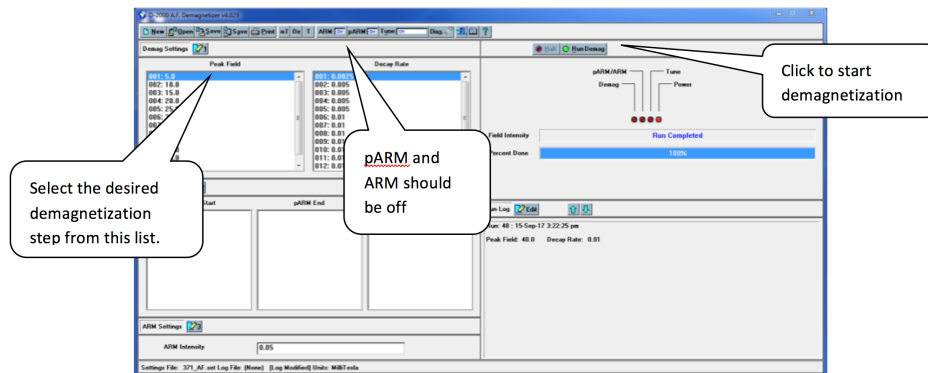


Figure 5: Main D-2000 Window with demagnetization set selected

3. Click **Run Demag**.
 - a. Once the "Percent done" loading bar has reached 100% and the "Field Intensity" bar states: "Run Completed," the samples can be removed.

4. Reorient the specimens in the DTech and repeat the demagnetization at the same field two more times (3 total demagnetization for each cube at each step).
 - a. The orientation of the cubes should be switched for each demagnetization level to reduce the chance of imparting a field in one direction. For example:
 - i. X, Y, Z in at 5 mT
 - ii. X, Y, Z out at 10 mT
 - iii. Y, Z, X in at 15 mT
 - iv. Y, Z, X out at 20 mT
5. Measure the samples in the JR-6 after each demagnetization level and then repeat the demagnetization process at the next step.

PARM

1. Click the number **2** next to the "pARM Settings" to open the pARM settings window (Figure 6).
2. Choose the desired starting field, ending field, and intensity for the particular pARM. Create a list of the desired steps by clicking add or insert. Click accept when the list is finished.
3. Click the **pARM off** button on the top toolbar so that it displays **pARM on**.
4. Place samples inside the Dtech.
5. Click **Run pARM**.

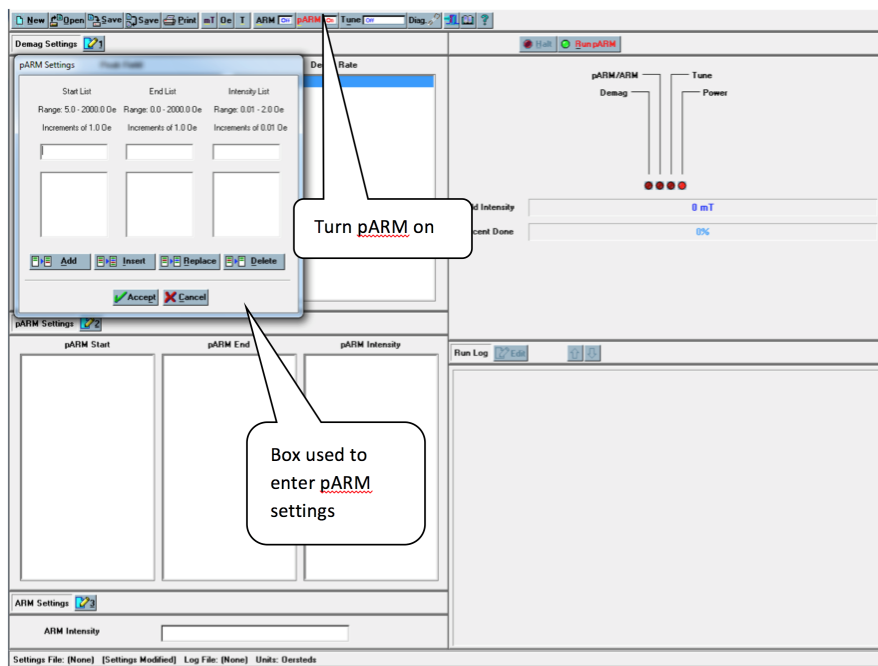


Figure 6: pARM Settings

ARM

1. Click the number **3** next to the "ARM Settings" to open the ARM settings window. (Figure 7)
2. Choose the desired intensity settings for the particular ARM. And choose **Accept**.
3. Click the **ARM off** button on the top toolbar so that it displays **ARM on**.
4. Place samples in Dtech.
5. Click **Run ARM**.

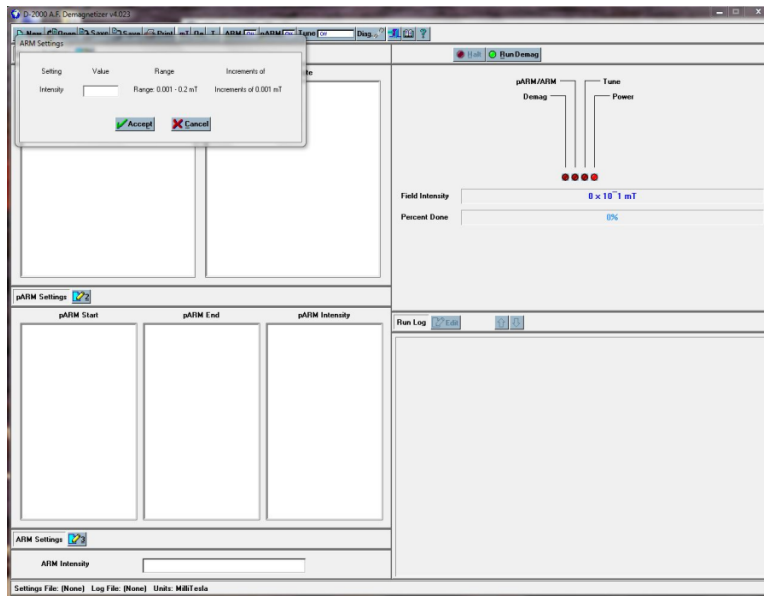


Figure 7: ARM settings

Miscellaneous

- The question mark "?" at the top right of the tool bar can be used to answer most questions the user may have regarding this program.
- The following is a table of specifications for the D-2000 A.F. Demagnetizer:

| Specifications: | |
|------------------------|--|
| AF Peak Field: | 0.2 T (2000 Gauss) |
| Minimum AF Field Step: | 0.0001 T (1.0 Gauss) |
| ARM Peak Field: | 0.0015 T (1.5 Gauss) |
| PARM Peak Field: | 0.0015 T (1.5 Gauss) |
| AF Decay Rates: | Eight discrete rates available |
| Minimum PARM Step: | 0.0001 T (1.0 Gauss) |
| Sampling Handling | Static - Holds 4 (D-2000) or 3 (D-2000T) 1" cyl. or cube samples D-2000T Tumbler - Holds one 1" dia or 2 cm cube <i>Tumbler is removable, allowing Static or Tumbler operation</i> |
| Computer Interface: | Mobile Pentium-based computer |
| Operating System: | Microsoft Windows |

Source: ascscientific.com